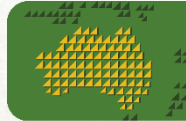




616F

MAGNUM 600F

Heavy Duty Fixed Offset Disc Harrows



Asyannah[®]

AGRO-FORESTRY SOLUTIONS



Asyannah®

AGRO-FORESTRY SOLUTIONS

Asyannah® “Fixed Disc” Offset Disc Harrow cuts more aggressively with less maintenance than any disc on the market.

Asyannah® offers the only offset in the world that mounts each disc on a single arm and dual tapered roller bearing hub assembly. The flexibility this design offers ensures aggressive deep tillage in the most adverse soil, root, and debris conditions with the most serviceable features that reduce maintenance and downtime.

The Asyannah® 600F Series Offset Disc provide the most force per disc of any offset available in the market. Each heavy-duty disc bolts on to a 4.2” (110mm) diameter spindle and hub system with a 5 degree under-cut that improves the ability of each disc to maximize penetration. This design allows the bearing and hub assembly to mount behind the disc so the front concave face is totally open so soil flow over the entire face of the disc is maximized to produce optimum soil treatment.

When maintenance of a disc or bearing hub is required, imagine servicing in minutes not hours. Each disc mounts with 6 bolts and nuts to the face, and replacing a single disc is as easy as changing a tire. Each bearing hub assembly bolts to an arm with 4 ¾” bolts and nuts and can be replaced in minutes as well.

The optimum set of each disc is achieved by the geometry of each arm verses having to angle the front and rear gang to get the improved tillage. The result is a nearly perpendicular gang set that reduces the length of the offset disc and balances the negative effects of “side draft.”



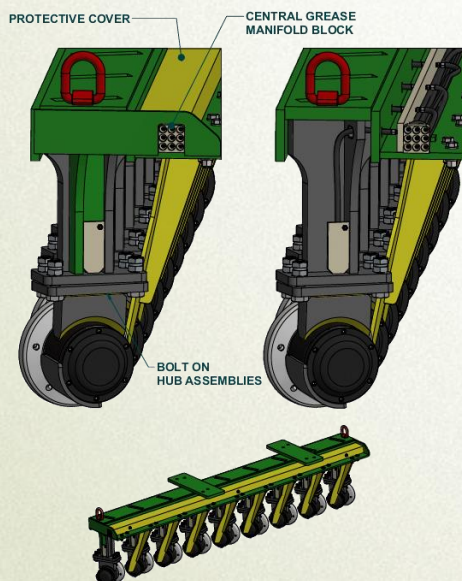


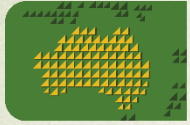
AGRO-FORESTRY SOLUTIONS

FEATURES

- Heavy-duty with rugged construction and design that Asyannah® products are known for.
- Independent spindle and hub equipped with dual tapered roller allows mounting of the disc at the optimum tillage angle.
- Front and rear gangs are set with adjustable bolts that allow a 0-5 degree adjustment of disc angle.
- “Open face” disc that uses 6 bolts to attach to the spindle uses the full face of the disc to move soil; no other disc can make this claim. The result is optimum penetration and tillage.
- Concave side of the disc completely open without a bearing housing to obstruct soil flow.
- Independent disc design allows 5° undercut of each disc set which allows maximum disc penetration.
- Single arm for each disc welded with bolt on hub assembly for ease of replacing if ever required.
- Highest force per disc of any offset available; average 1,100lbs per disc for all models.
- Central grease port for front and rear gangs.
- With the proper parts inventory, any disc or bearing failure can be serviced in minutes not hours or days.
- Standard 14” (355mm) depth of penetration with 36” diameter disc blades.
- Optional 16” (405mm) depth of penetration with 42” (1.07m) diameter disc blades.

SPINDLE GREASE SPECIFICATIONS



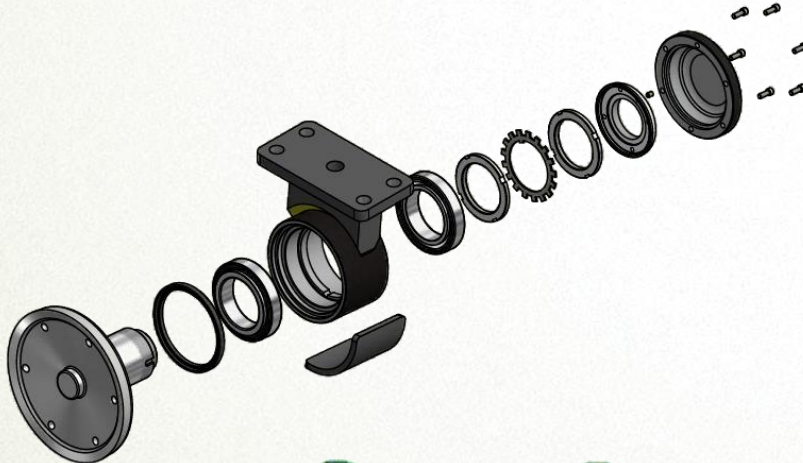


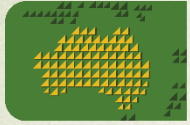
Asyannah®

AGRO-FORESTRY SOLUTIONS

SPECIFICATIONS

- 36" (914mm) diameter x ½" (13mm) thick, notched deep concavity disc blades with 6 x 5/8" bolt pattern
- Hydraulic tongue leveler
- Replaceable, adjustable disc blade scrapers
- High tensile 4.25" (110mm) diameter spindles
- Replaceable abrasion resistant hub wear plates
- Single arm for each disc welded with bolt on hub assembly for ease of replacing, if ever required
- Average cutting force per disc 1,100 lbs
- Central grease port for front and rear gangs
- Hydraulic control group includes (2) 5" x 12" lift and leveling cylinders
- 32" x 14.5" x 16-ply industrial flotation tires
- Optional 42" (1.07m) diameter x ½" (13mm) thick notched deep concavity disc blades





Asyannah[®]

AGRO-FORESTRY SOLUTIONS




Asyannah® 600F Fixed Offset Disc Model Range Specifications

Model Number	Width of Cut ft. (m)	Number of Discs	Suggested Horsepower	Weight Per Disc lbs (kg)	Net Weight lbs (kg)
612F	10' (3)	12	225-275	1,260 (572)	15,150 (6,872)
614F	11.5' (3.5)	14	250-325	1,280 (580)	17,950 (8,142)
616F	13' (4)	16	300-350	1,220 (553)	19,530 (8,858)
618F	15.5' (4.7)	18	350-400	1,060 (480)	20,800 (9,434)
620F	17' (5.2)	20	375-450	1,100 (500)	22,070 (10,010)
624F	19.5' (6)	24	450-600	1,010 (460)	24,250 (11,000)



AGRO-FORESTRY SOLUTIONS

An Entity Of:
 Savannah Global Solutions, LLC
 147 East Industrial Blvd
 Pembroke, GA 31321
 United States
+1 912 200-7700
sg@savannahglobal.com

 asyannah.com

DEALER INFORMATION